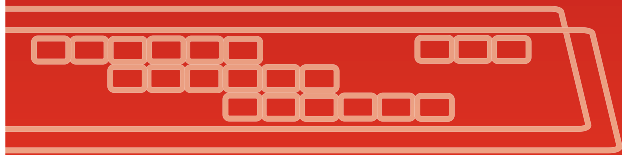




MANAGE RISK

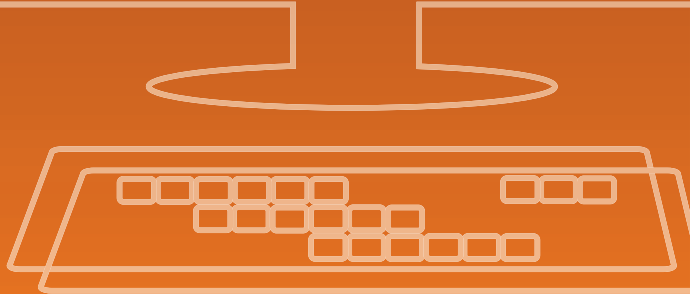


The security stakes are high. Protect your workplace. Never share your password and do not communicate information about networks, protocols or IP addresses with anyone outside the company. Always back up your data, and be sure critical computers are securely locked down.

Don't let the odds stack up against you. BeCyberSecure.com



ASSESS VULNERABILITY

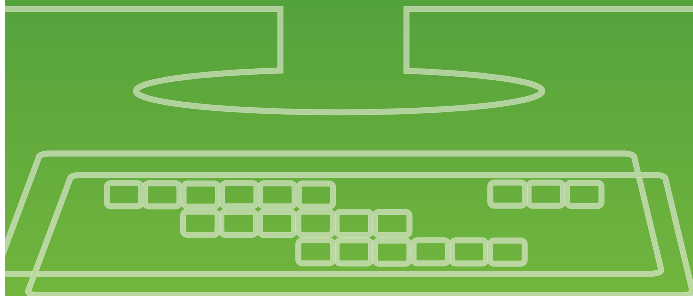


Hackers are tricky. Protect your workplace and your privacy. Be sure sensitive data is encrypted and patches are installed to add protection against hacking and viruses. Maintain a strong password that's difficult to decipher and never post it in an obvious place. Make sure USB flash drives are tested and free of viruses before using on critical systems.

Don't invite mistakes of epic proportions. BeCyberSecure.com



DETECT THREATS



Electronic communication isn't always what it seems. Protect your workplace. Make sure e-mails you receive are from trusted sources before opening and never download files unless you are sure you need them and they are safe. Keep anti-virus software current and don't leave your computer accessible to others.

Don't let an innocent-looking e-mail pull the wool over your eyes. BeCyberSecure.com